



Valet Living
Doorstep

Doorstep Collection Guide - Cardboard Boxes

Please flatten all boxes

Cardboard and paperboard boxes include but are not limited to the following:

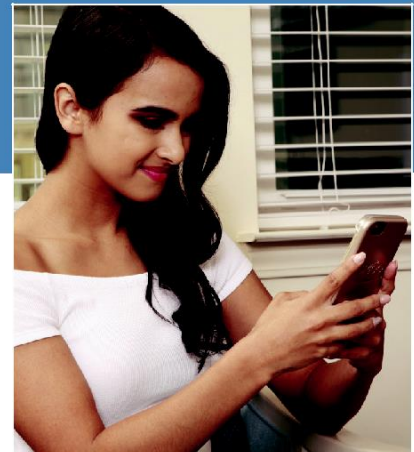
- Cardboard moving/storage boxes
- Packaging boxes
- Pizza boxes
- Cereal or other food boxes



Flatten all cardboard and paperboard boxes that do not fit inside the provided Valet Living container.



Place your boxes outside, underneath or behind your Valet Living container between 5:00 PM and 7:00 PM for collection.



Contact Valet Living Support if you have a large amount of boxes that will be placed outside with your waste and recycling.

No Service Holidays

Easter Sunday
Memorial Day
Fourth of July
Labor Day
Halloween

Thanksgiving Day

Christmas Eve & Christmas Day
New Year's Eve & New Year's Day



Valet Living
Setting the Standard

Tell us how we're doing!

1-877-574-2587

Support@ValetLiving.com

ValetLiving.com